



# T-PRINT TEMPERATURE RECORDER WITH PRINTER FOR SEMI-TRAILER

Preliminary  
- from April

**USE:**

- print-out of temperature record during transport of food, pharmaceuticals, flowers, live animals and other goods
- designed for outdoor installation e.g. on semi-trailer of the truck

**FEATURES:**

- record from one or two temperature probes
- two binary inputs for event record - door opening, unit operation
- numerical or graphical print-out of temperature
- print from the last record to the history till button is pressed
- print up to set hour in current day
- print of set number of hours to the history
- fast print to usual 57mm thermo paper in 10m rolls
- 3400 record lines/one paper roll, 5 years print-out archivability
- large graphic illuminated display
- indication of temperature exceeding by LED and acoustically
- record of actual or average values at logging interval
- USB interface for record download to the PC
- cyclic record - after filling the memory oldest records are overwritten by new
- no need to download data - large 1MB memory stores up to 5 years of record permanently in memory
- robust heavy duty PA and polycarbonate case, easy installation
- included traceable calibration certificate
- conforms to EN 12830, Class 1 and EN 13486, Class 1 for the transport of food
- degrees of Celsius and Fahrenheit
- fifteen selectable languages - e.g. English, German, French, Italian, Polish, Dutch, Spanish, Portuguese, Romanian, Czech



**TECHNICAL PARAMETERS**

Measuring temperature range:	-90 to +260 °C (-50 to +250 °C for Ni1000 sensor)
Operating temperature range:	-30 to +65 °C
Operating temperature range of the printer:	-20 to +50 °C
Compatible temperature probes:	with four-wire Pt1000 sensor; maximum cable length 30 meters
Accuracy of the input without probe:	±0.2 °C
Resolution:	0.1 °C
Connection of temperature probes:	to terminals under removeable instrument electronics
Logging interval:	user selectable from 1 minute to 60 minutes
Memory capacity:	1MB - 172 032 records from one probe, 102 400 records from two probes (up to 5 years with 15 minutes interval and one probe)
Power:	9 to 32Vdc, protected against alternator load shedding+internal Lithium battery
Consumption while printing:	approximately 8 W
Consumption - not printing:	approximately 0,05 W
Dimensions, weight:	approximately 250 x 240 x 90 mm (w x h x d), weight 700 grams
Protection:	IP65

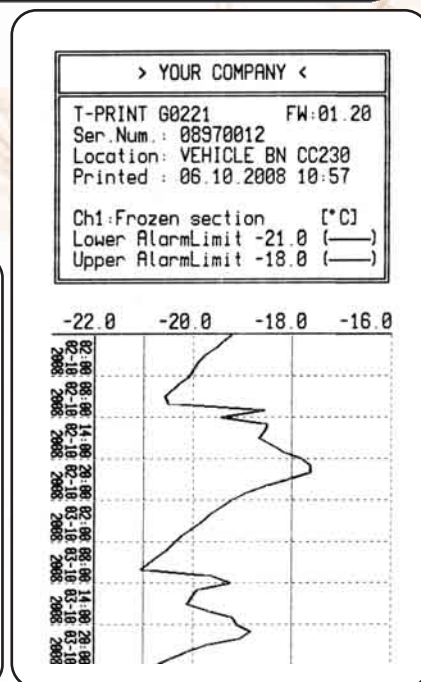
**Included in delivery:**


Included is **traceable calibration certificate** from the manufacturer. Calibration certificate with declared metrological traceability of etalons is based on requirements of EN ISO/IEC 17025 standard.  
Included is also roll of paper with 5 years print-out archivability, USB cable for communication with the PC, battery for internal clock.

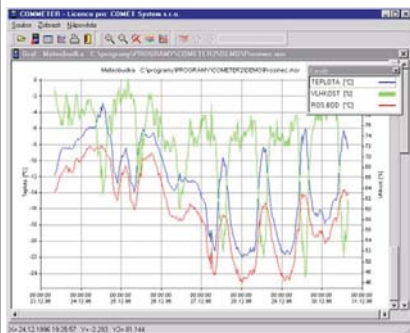
Anytime it is possible to download free basic program for Windows. Program enables to control all logger functions and viewing and printing of record in numerical and simple graphic format. It is possible to export recorded temperature values to dbf or txt formats for further analysis. It is necessary to order temperature probes - see below.



YOUR COMPANY			
T-PRINT G0221		FW:00 13	
Ser Num : 07970003			
Location: VEHICLE BN CC230			
Printed : 04 03 2008 6:41			
Ch1:FROZEN SECTION			
Lower AlarmLimit -25 0			
Upper AlarmLimit -22 0			
Ch2: CHILLED SECTION			
Lower AlarmLimit 1 0			
Upper AlarmLimit 8 0			
03 03 2008	Ch1	Ch2	
15:00:00	19.7	6.8 °C	
15:05:00	21.1	4.8 °C	
15:10:00	21.7	4.0 °C	
15:15:00	-22 0	3.6 °C	
15:20:00	-22 3	3.0 °C	



 Optional accessory:



**SWR004**

optional software for Windows - color printing, vertical and horizontal zooming of graphs and other functions.



**SW100**

CD with free PC program



**Pt1000 probes**

Four-wire temperature probes with Pt1000 sensors with cables up to 30 meters



**PRO33**

spare roll of thermo paper - width 57mm, length 10m, 5 years archivability



**A1940**

acdc adapter 230V-50Hz/24Vdc/24W for power from mains

**A4101**

spare Lithium battery CR2032 3V