

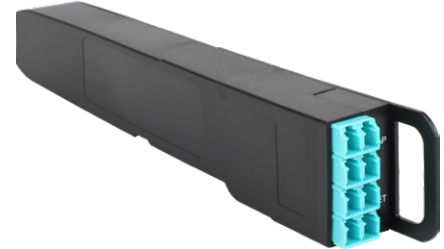
40G BiDi TAP MODULE



A PERFECT BLEND OF PERFORMANCE AND FLEXIBILITY

The MOD-TAP is the result of years of experience with high-end fiber optic technology as well as sturdy chassis construction design. The MOD-TAP is a high-density, modular fiber optic solution providing up to 24 LC TAP modules or 16 MTP or 40G BiDi TAP modules in 1U.

40G BiDi Modules use OM4 Multi-Mode (850/1310nm 50µm) fiber optic cabling with a 50/50 split ratio for the monitoring of Cisco 40G bidirectional links.



MAXIMUM INSERTION LOSS (dB)

SPLIT RATIO	50 / 50
40G BiDi (MM 50µm)	3.8 / 3.8

Note: These values don't include external connector loss.

FEATURES

- Non-intrusive in-line monitoring
- Permanent network link guaranteed
- Monitoring of all OSI layers
- No packet loss, no point of failure
- Passive, unpowered
- High density and modular
- LC, MTP, 40G BiDi, and DiodeTAP modules available
- 10-year warranty

PRODUCT SPECIFICATIONS

CHASSIS	ORDER REFERENCE
1U Modular Chassis (up to 16 40G BiDi modules)	AMC-1U

CONNECTORS	TYPE / SPEED	SPLIT RATIO	ORDER REFERENCE
LC	MM 50/125 µm / 40G	50/50	F1B-MOD

PRODUCT DIMENSIONS

	DIMENSIONS (WxDxH)	WEIGHT
MODULAR CHASSIS	440 x 202 x 44 mm	2140 g
	17.3 x 8 x 1.7 in	4.7 lb
40G BiDi MODULE	25 x 217 x 41 mm	90 g
	1 x 8.5 x 1.6 in	0.2 lb



hkaco.com



加关注

需要更多信息? 请通过sales@hkaco.com联系我们。

hkaco.com

