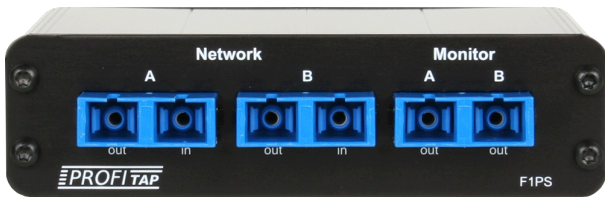


Portable SC Fiber Optic Tap



- Passive monitoring
- No point of failure
- No power required
- Compact, easy to carry around

Portable: take it everywhere

The most complete and cost effective Fiber Tap solution for the field service engineer. Dual compartment zipper pouch protects Tap and fragile Fiber Cords.

Once in place it enables you to monitor half/full duplex networks and move test equipment without breaking the circuit.

The Permanent Network Link feature guarantees permanent network connectivity. Unlike SPAN ports it monitors all 7 protocol layers including errors. It is a real time full duplex wire speed device forwarding any package size including errors.

The Tap is none intrusive for 100% security. They are transparent to the network and cause no point of failure.

Maximum Insertion Loss (dB):

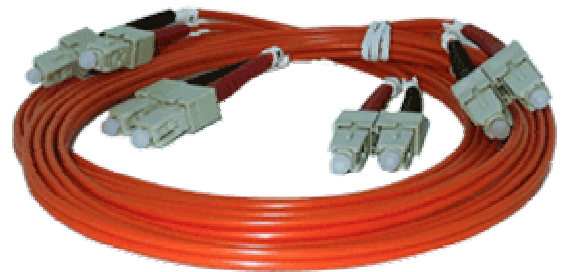
Split ratio	50/50	60/40	70/30	80/20	90/10
Multi Mode 50/62.5 + 10Gb	4.4/4.4	3.1/5.0	2.4/6.3	1.8/8.1	--
Single Mode	3.7/3.7	2.8/4.9	2.0/6.1	1.3/8.0	0.8/12.0

MultiMode 50/62.5µm....Dual Wavelength 850/1300 nm
MultiMode 10Gb/50µm..Wavelength 850 nm
Single Mode.....Dual Wavelength 1310/1550 nm

The Fiber Taps are "all-optical", data rate independent and designed for use in 10/100/1000 and 10Gb Ethernet, ATM, SONET, FDDI, etc.

High Quality (low loss) Zirconia sleeve adapters are used in both Multi and Single Mode models.

The portable model is delivered with everything you need to easily use and transport it. The foamed, anti-shock zipper pouch protects the TAP and its accessories.



- 2 x 2m Duplex Fiber Cables



- Dual compartment zipper pouch

Main unit dimensions (WxDxH): 113 x 88 x 30 mm
Weight: 200 g



hkaco.com



加关注